

Giulio Cesare

A lyric opera in three acts by George Frideric Handel
Libretto by Nicola Francesco Haym, after Giacomo Francesco Bussani's *Giulio Cesare in Egitto*

First performed: Festival 2005



Tristram Kenton

CREATIVE TEAM

Director David McVicar
Set Designer Robert Jones
Costume Designer Brigitte Reiffenstuel
Lighting Designer Paule Constable
Choreographer Andrew George
Fight Director Mark Ruddick

CHORUS BREAKDOWN

5 Tenors
5 Basses
5 Sopranos (off-stage)
5 Mezzos (off-stage)
6 Actors (2 female, 4 male)

ON-STAGE MUSICIANS

Act II on-stage band (in costume)
- 2 vins, via, cello, gamba, oboe, bassoon, theorbo, harp

TECHNICAL PERSONNEL

12 Stage Crew
4 Flymen (inc. 2 from the stage crew)
6 Stage Managers
5 Lighting Crew
1 Follow Spot
5 Running Wigs
6 Make-Up
2 Running Wardrobe
7 Dressers

SPECIAL EFFECTS

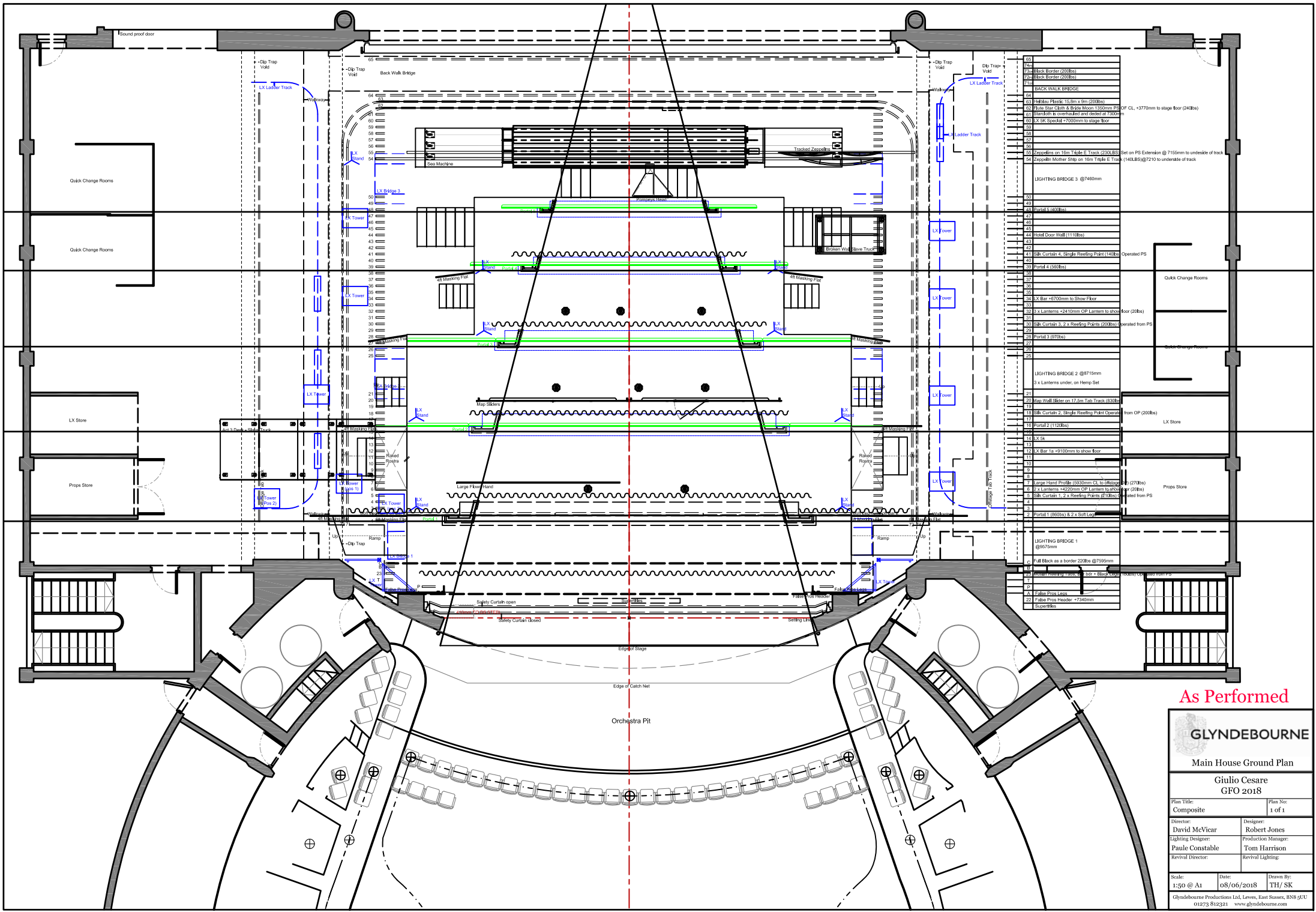
Gunshot
Smoke
Fire

TRANSPORT

4 High Cube Containers or
4 Megacube Trailers



Mike Hoban



As Performed

GLYNDEBOURNE

Main House Ground Plan

Giulio Cesare
GFO 2018

Plan Title:
Composite

Plan No:
1 of 1

Director:
David McVicar

Lighting Designer:
Paule Constable

Revel Director:

Designer:
Robert Jones

Production Manager:
Tom Harrison

Revel Lighting:

Scale:
1:50 @ A1

Date:
08/06/2018

Drawn By:
TH/ SK

Glyndebourne Productions Ltd, Lewes, East Sussex, BN9 5UJ

01273 812321 - www.glyndebourne.com

