

Hamlet

A lyric opera in two acts by Brett Dean
Libretto by Matthew Jocelyn, adapted from William Shakespeare’s play

First performed: Festival 2017



Richard Hubert Smith

CREATIVE TEAM

Director Neil Armfield
Set Designer Ralph Myers
Costume Designer Alice Babidge
Movement Director Denni Sayers
Lighting Designer Jon Clarke
Fight Director Nicholas Hall

CHORUS BREAKDOWN

10 Tenors
10 Basses
10 Sopranos
10 Mezzos
10 Actors (3 female, 7 male)

ON-STAGE MUSICIANS

1 On-Stage Accordionist

TECHNICAL PERSONNEL

16 Stage Crew (in costume)
3 Flymen
6 Stage Managers
4 Lighting Crew (inc. 1 in costume)
1 AV Operator
8 Running Wigs
7 Make-Up
3 Running Wardrobe
10 Dressers

SPECIAL EFFECTS

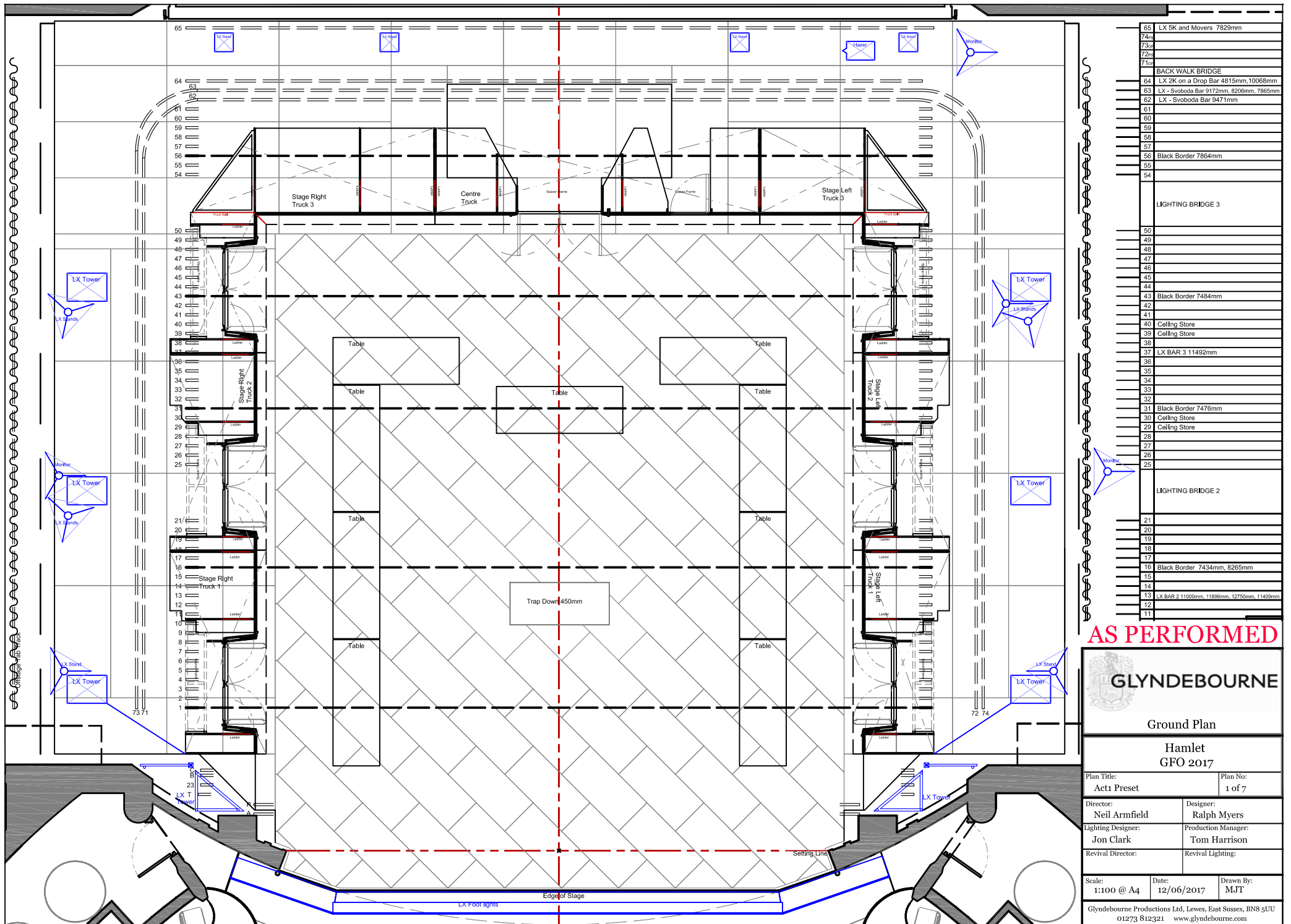
Blood and vomit effects
Trap and stage elevator
Automation for flown ceiling

TRANSPORT


4 High Cube Containers (set and Props)
+ 1 20’ Container (costumes)

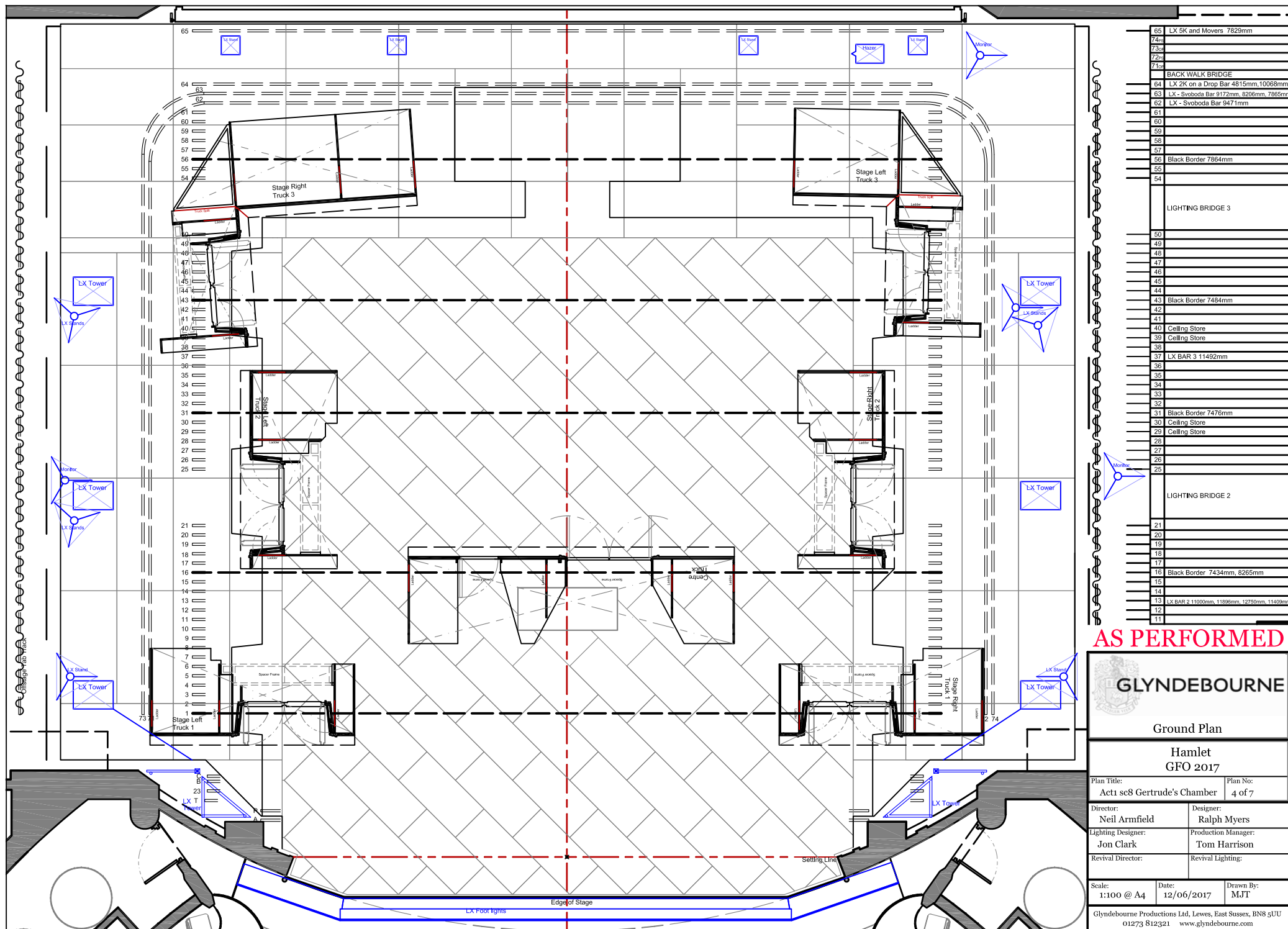


Sam Stephenson




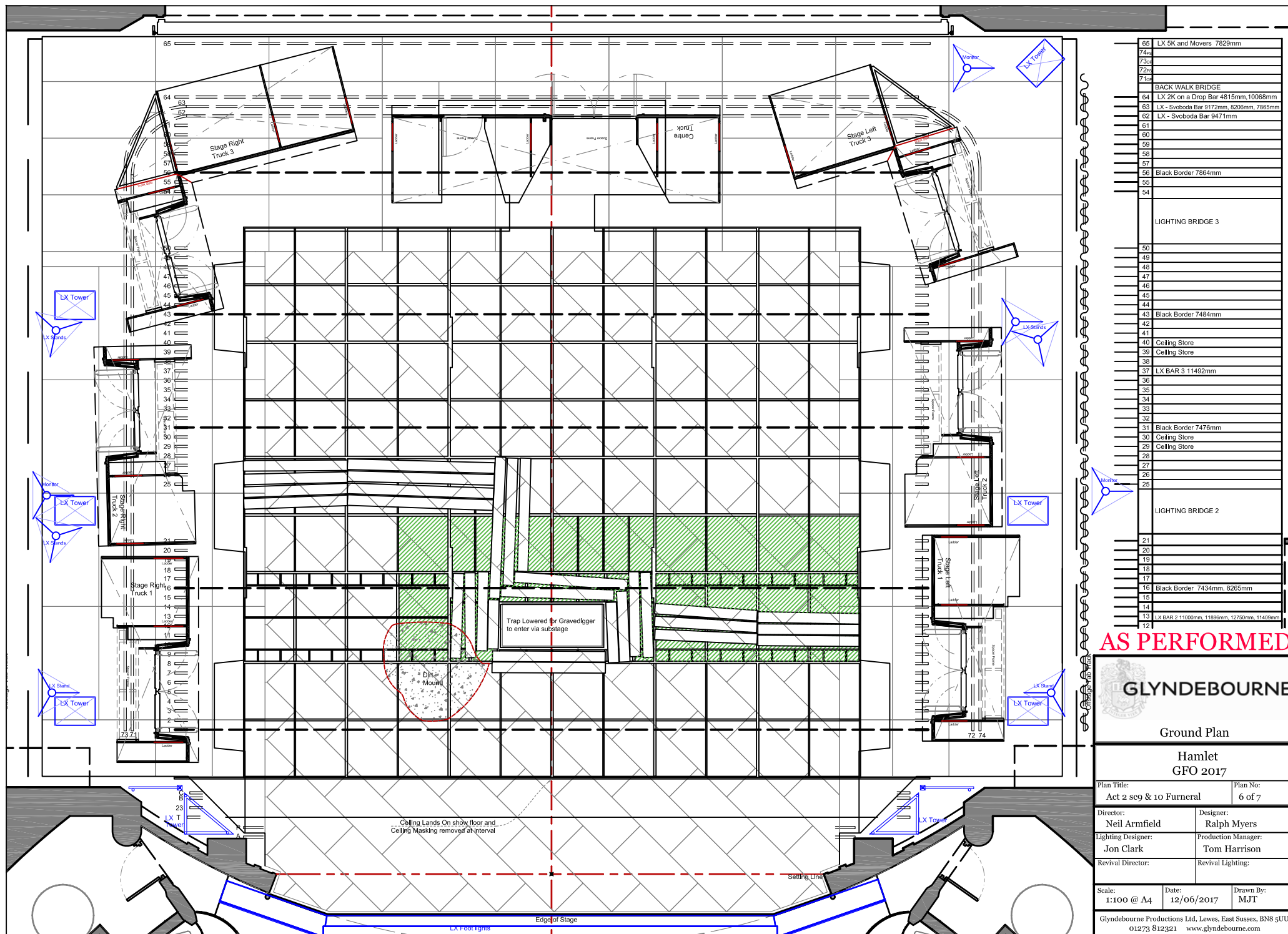
AS PERFORMED

	
GLYNDEBOURNE	
Ground Plan	
Hamlet GFO 2017	
Plan Title: Act1 Preset	Plan No: 1 of 7
Director: Neil Armfield	Designer: Ralph Myers
Lighting Designer: Jon Clark	Production Manager: Tom Harrison
Revival Director:	Revival Lighting:
Scale: 1:100 @ A4	Date: 12/06/2017
Drawn By: MJT	
Glyndebourne Productions Ltd, Lewes, East Sussex, BN8 5UU 01273 812321 www.glyndebourne.com	




AS PERFORMED

 GLYNDEBOURNE			
Ground Plan			
Hamlet GFO 2017			
Plan Title:	Act1 sc8 Gertrude's Chamber	Plan No:	4 of 7
Director:	Neil Armfield	Designer:	Ralph Myers
Lighting Designer:	Jon Clark	Production Manager:	Tom Harrison
Revival Director:		Revival Lighting:	
Scale:	1:100 @ A4	Date:	12/06/2017
		Drawn By:	MJT
Glyndeboune Productions Ltd, Lewes, East Sussex, BN8 5UU 01273 812321 www.glyndeboune.com			



AS PERFORMED

 GLYNDEBOURNE	
Ground Plan	
Hamlet GFO 2017	
Plan Title: Act 2 sc9 & 10 Funeral	Plan No: 6 of 7
Director: Neil Armfield	Designer: Ralph Myers
Lighting Designer: Jon Clark	Production Manager: Tom Harrison
Revival Director:	Revival Lighting:
Scale: 1:100 @ A4	Date: 12/06/2017
Drawn By: MJT	
Glynedebourne Productions Ltd, Lewes, East Sussex, BN8 5UU 01273 812321 www.glynedebourne.com	

