

A Midsummer Night's Dream

An opera in three acts by Benjamin Britten

Libretto by Benjamin Britten and Peter Pears adapted from the play by William Shakespeare

First performed: Festival 1981



Robert Workman

CREATIVE TEAM

Director Peter Hall

Revival Director and

Original Choreographer Lynne Hockney

Designer John Bury

Lighting Designer Paul Pyant

CHORUS BREAKDOWN

16 Singing children (boys)
4 + 1 Puck non-singing (boys)
12 Actors (6 female, 6 male)
6 Supers (male)

TECHNICAL PERSONNEL

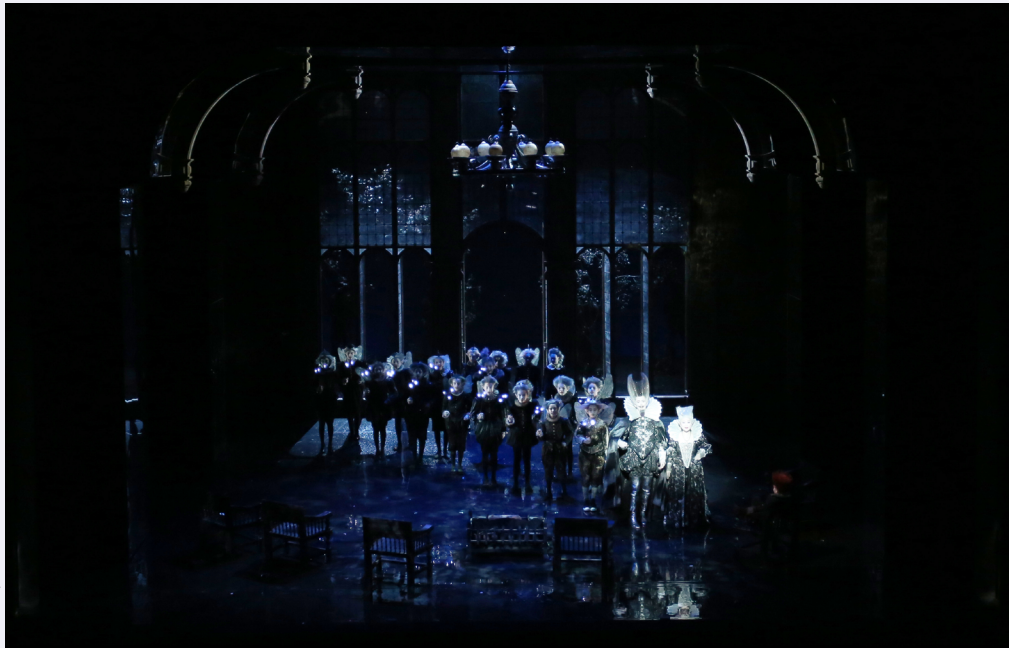
18 Stage Crew (included 6 in costume)
6 Flymen (from Stage Crew)
6 Stage Managers
7 Lighting Crew +
2 Follow Spots
5 Running Wigs
6 Make-Up
2 Running Wardrobe
6 Dressers

SPECIAL EFFECTS

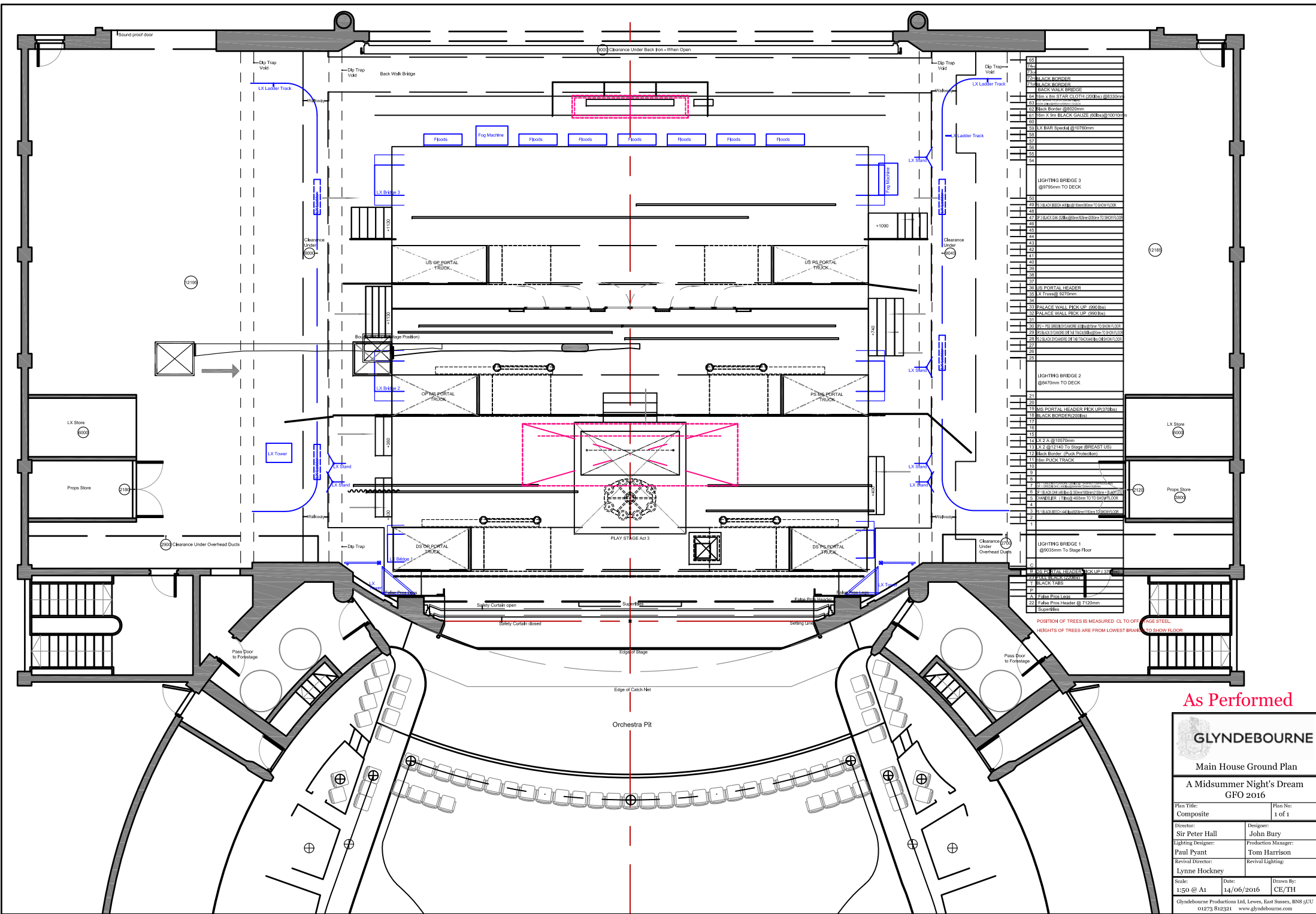
Fog, dry ice
Gas log fire
Sample voices
Amplification for Puck
Prosthetics
Trap
Flying boy (Puck)

TRANSPORT

3 High Cube Containers or
3 Megacube Trailers (approximately)

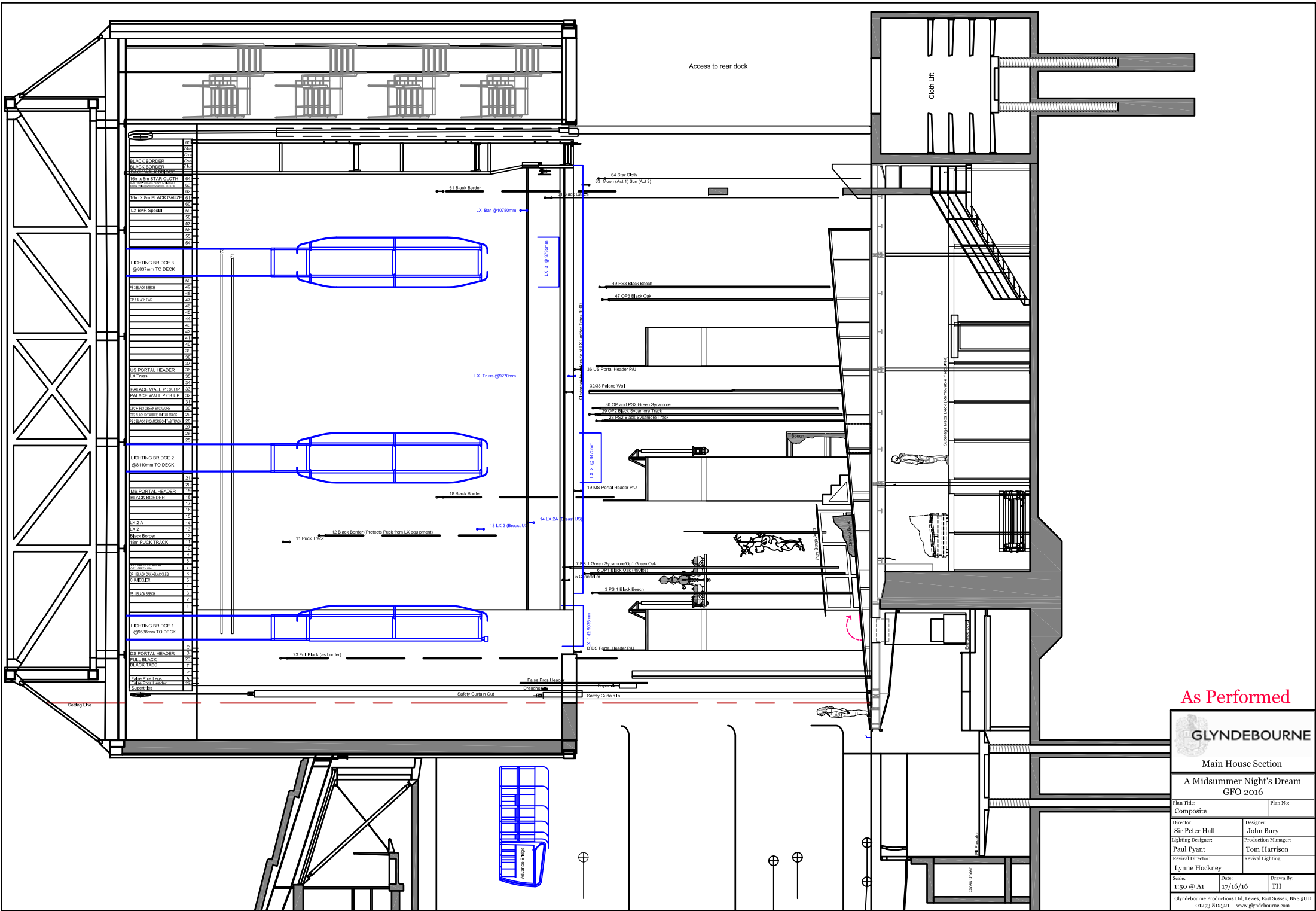


Sam Stephenson




As Performed

GLYNDEBOURNE		
Main House Ground Plan		
A Midsummer Night's Dream		
GFO 2016		
Plan Title: Composite	Plan No: 1 of 1	
Director: Sir Peter Hall	Designer: John Bury	
Lighting Designer: Paul Pyant	Production Manager: Tom Harrison	
Revival Director: Lynne Hockney	Revival Lighting:	
Scale: 1:50 @ A1	Date: 14/06/2016	Drawn By: CE/TH
Glyndebourne Productions Ltd, Lewes, East Sussex, BN8 8UJ 01273 812321 www.glyndebourne.com		



As Performed

 GLYNDEBOURNE		
Main House Section		
A Midsummer Night's Dream		
GFO 2016		
Plan Title:	Plan No:	
Composite		
Director:	Designer:	
Sir Peter Hall	John Bury	
Lighting Designer:	Production Manager:	
Paul Pyant	Tom Harrison	
Revival Director:	Revival Lighting:	
Lynne Hockney		
Scale:	Date:	Drawn By:
1:50 @ A1	17/16/16	TH
Glyndebourne Productions Ltd, Leves, East Sussex, BN9 8JU		
01273 812321 www.glyndebourne.com		