

Tristan und Isolde

An opera in three acts by Richard Wagner

Libretto by the composer

First performed: Festival 2003



Alistair Muir

CREATIVE TEAM

Director Nikolaus Lehnhoff

Set Designer Roland Aeschlimann

Costume Designer

..... Andrea Schmidt-Futterer

Lighting Designer Robin Carter

CHORUS BREAKDOWN

17 Tenors

17 Basses

TECHNICAL PERSONNEL

9 Stage Crew

2 Flymen

5 Stage Managers

7 Lighting Crew

4 Follow Spots

2 Running Wigs

2 Make-Up

1 Running Wardrobe

2 Dressers

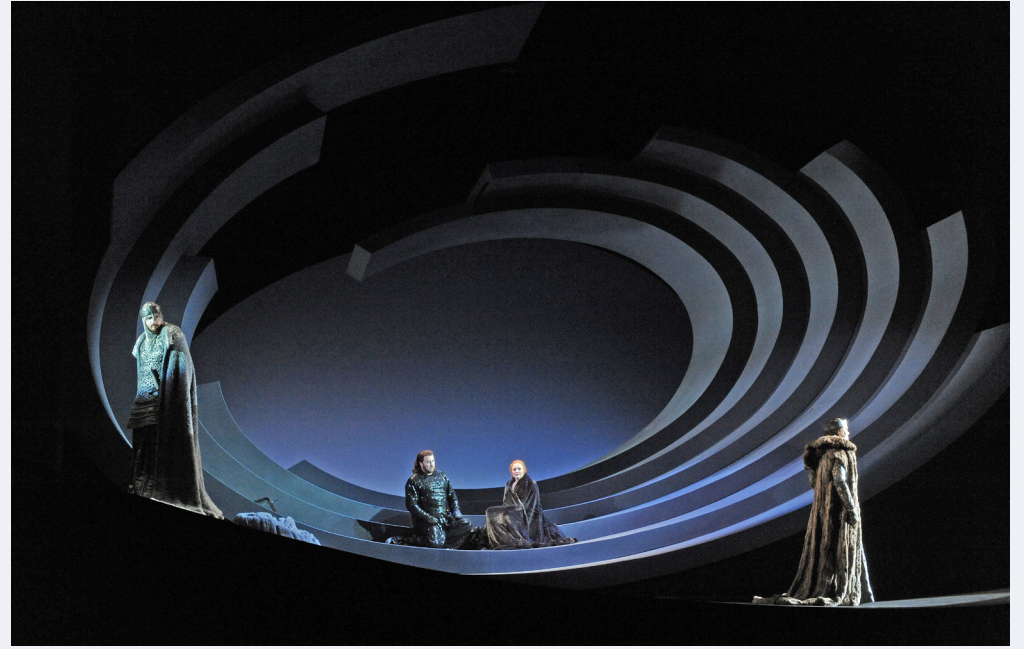
SPECIAL EFFECTS

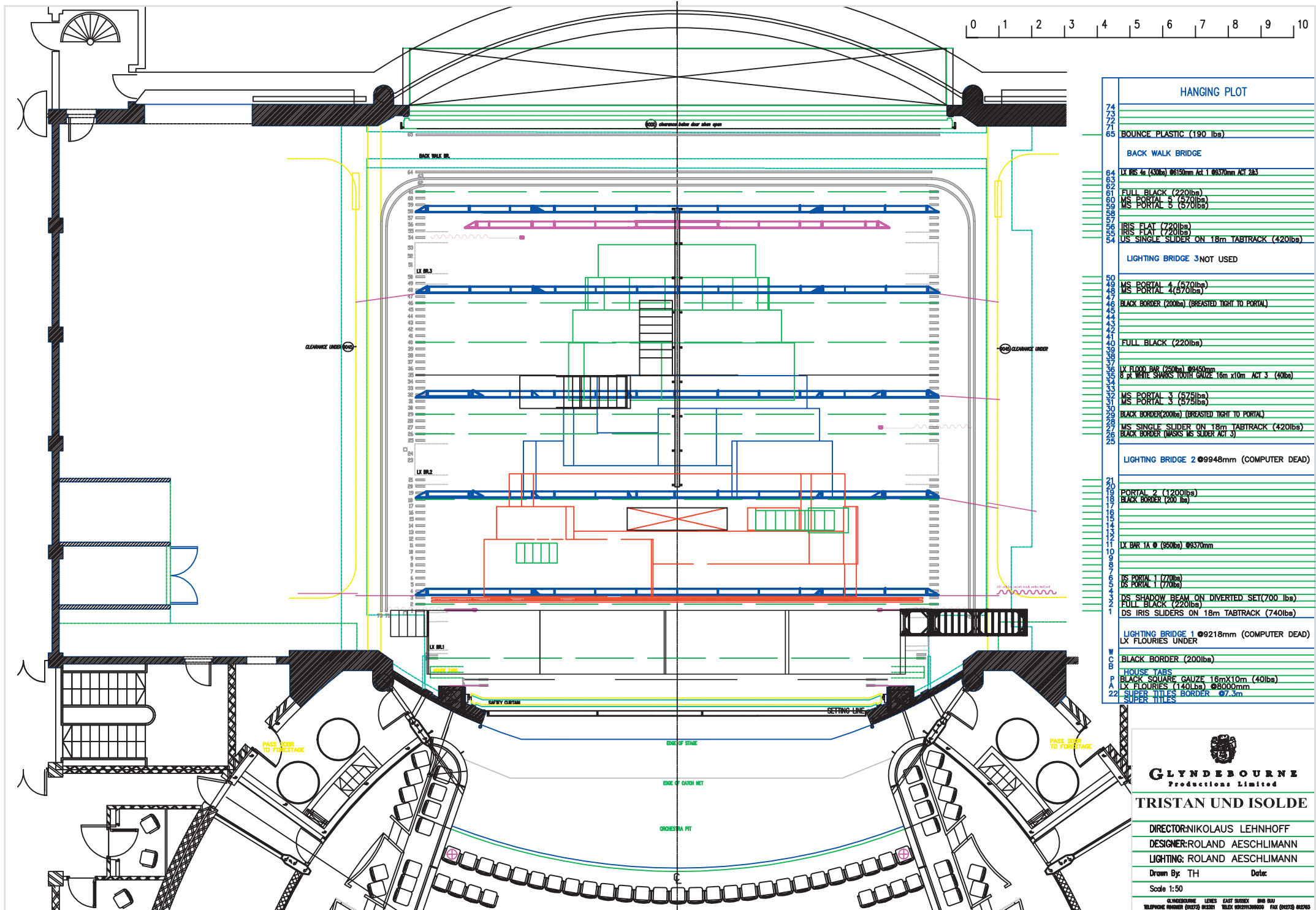
Hydraulics for motorised iris

TRANSPORT

7 High Cube Containers or

7 Megacube Trailers (approximate)





HANGING PLOT

- BOUNCE PLASTIC (190 lbs)
- BACK WALK BRIDGE
- LX RIS 4s (430lb) @6150mm Act 1 @6370mm Act 2s
- FULL BLACK (220lb)
- MS PORTAL 5 (570lb)
- IRIS FLAT (720lb)
- US SINGLE SLIDER ON 18m TABTRACK (420lb)
- LIGHTING BRIDGE 3NOT USED
- MS PORTAL 4 (570lb)
- BLACK BORDER (200lb) (BREASTED TIGHT TO PORTAL)
- FULL BLACK (220lb)
- LX FLOOD BAR (250lb) @9450mm
- 8 pL WHITE SPARKS 100W GAUZE 18m x10m Act 3 (40lb)
- MS PORTAL 3 (575lb)
- MS PORTAL 3 (575lb)
- BLACK BORDER(200lb) (BREASTED TIGHT TO PORTAL)
- MS SINGLE SLIDER ON 18m TABTRACK (420lb)
- BLACK BORDER (MASKS MS SLIDER ACT 3)
- LIGHTING BRIDGE 2 @9948mm (COMPUTER DEAD)
- PORTAL 2 (1200lb)
- BLACK BORDER (200 lb)
- LX BAR 1A @ (950lb) @9370mm
- MS PORTAL 1 (770lb)
- MS PORTAL 1 (770lb)
- MS SHADOW BEAM ON DIVERTED SET(700 lbs)
- FULL BLACK (220lb)
- DS IRIS SLIDERS ON 18m TABTRACK (740lb)
- LIGHTING BRIDGE 1 @9218mm (COMPUTER DEAD)
- LX FLOURIES UNDER
- BLACK BORDER (200lb)
- HOUSE TABS
- BLACK SQUARE GAUZE 16mX10m (40lb)
- LX FLOURIES (140lb) @8000mm
- SUPER 111ES BORDER @7.3m



GLYNDEBOURNE
Productions Limited

TRISTAN UND ISOLDE

DIRECTOR:NIKOLAUS LEHNHOFF
DESIGNER:ROLAND AESCHLIMANN
LIGHTING: ROLAND AESCHLIMANN
Drawn By: TH Date:
Scale 1:50

GLYNDEBOURNE LINES EAST SUSSEX BN9 6AJ
TELEPHONE NUMBER (01323) 852211 TELEFAX (01323) 852210 FAX (01323) 852215